

Human anti-Alpha Hemolysin (Hla) mAb (327)

Catalog Number: S200-001

Lot: 2204001

Concentration: 100 µg is supplied in PBS at 2.88 mg/mL.

Description: The staphylococcal alpha-toxin (Hla) is a major virulence factor contributing to *Staphylococcus aureus* pathogenesis. Hla is encoded by the *hly* gene and produces a 293-residue protein monomer capable of forming beta-barrel pores. Seven monomers come together on the host cell membrane to form a 14-angstrom pore that leads to apoptosis. The alpha toxin plays a large role in the apoptosis of immune cells such as T-cells, monocytes, and peripheral blood lymphocytes. Eliteimmune's anti-Hla mAb 327 is able to neutralize Hla in toxin neutralization assays (TNA) and targets a linear epitope on Hla, making it a useful research tool for western blots and ELISAs.

Product Type: Human Monoclonal Antibody IgG1 subtype

Strain: *Staphylococcus aureus*

Synonyms: α-hemolysin, Hla, alpha toxin, alpha-toxin, alpha-hemolysin

Expression Host: CHO

Tag: None

Purity: Antibody is purified using immobilized protein G.

Applications: ELISA, Western Blot, SDS-PAGE, toxin neutralization assays (TNA). Specific conditions should be optimized by end user.

Formulation: PBS

Storage: 4°C for immediate use, ≤-20°C for long-term storage. Avoid repeated freeze thaw cycles.

Shipped: Dry Ice

Intended Use: For research use only. Not intended for human, therapeutic, or diagnostic use. Buyer may not modify, sell, or transfer product for commercial use without written permission from Eliteimmune.

Recommended Dilutions:

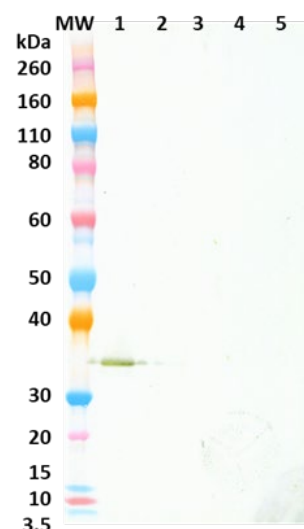
ELISA: Assay-dependent dilution. The antibody can be used for capture of Hla in an indirect ELISA assay and Western blot detection.

WB: Suggested use dilution of 0.50 µg/mL

Neutralization: Assay-dependent dilution

Cross Reactivity: This antibody does not appear to cross react with *S. aureus* antigens LukF, LukS, SEA, or SEB, at the tested concentrations.

Western Blot



Western blot detection of Hla (lane 1), LukF (lane 2), LukS (lane 3), SEA (lane 4) and SEB (lane 5), 200ng each. Hla was detected with monoclonal antibody 327 at 0.50 µg/mL and an anti-human IgG-HRP conjugate.

ELISA Data:

ng/mL	OD 650 nm				
	Hla	LukF	LukS	SEA	SEB
100.000	3.708	0.26	0.334	0.074	0.085
10.000	3.722	0.081	0.066	0.065	0.172
1.000	3.706	0.085	0.082	0.098	0.073
0.100	3.564	0.098	0.078	0.077	0.074
0.010	3.071	0.064	0.073	0.070	0.083
0.001	1.057	0.092	0.071	0.063	0.071
0.000	0.226	0.103	0.072	0.067	0.073
0.000	0.104	0.070	0.090	0.073	0.201

S. aureus antigens were diluted to 2 µg/mL in PBS for plate coating. Anti-Hla antibody 327 was serially diluted ten-fold from 100 µg/mL and incubated on the coated plates. Washed plates were detected with anti-human IgG-HRP conjugate and TMB substrate. OD650 is reported above.