

Human anti-LukF-PV mAb (O51)

Catalog Number: S200-002

Lot: 2204002

Concentration: 100 µg is supplied in PBS at 1.795 mg/mL.

Description: Pantone-Valentine leucocidin (PVL) is a cytotoxin released by *Staphylococcus aureus* and causes leukocyte lysis and tissue necrosis. PVL, is a bi-component exotoxin consisting of Leukocidin F (LukF) and Leukocidin S (LukS). Together, the two subunits join together to form beta barrel pores on the membrane of host immune cells such as white blood cells, monocytes and macrophages. The 34kDa structure of LukF has been solved in PDB 1PVL. EliteImmune's LukF targeting mAb 51 can be used in toxin neutralization assays (TNA) and is also a useful research tool for ELISAs and western blots.

Product Type: Human Monoclonal Antibody IgG1 subtype

Strain: *Staphylococcus aureus*

Synonyms: Gamma-toxin, gamma toxin, gamma hemolysin, hemolysin, PVL, LukF-PVL, leucocidin, leucocidin F, Pantone-Valentine leucocidin, LukF, pore forming toxin, exotoxin

Expression Host: CHO

Tag: None

Purity: Antibody is purified using immobilized protein G.

Applications: ELISA, Western Blot, SDS-PAGE, toxin neutralization assays (TNA). Specific conditions should be optimized by end user.

Formulation: PBS

Storage: 4°C for immediate use, ≤-20°C for long-term storage. Avoid repeated freeze thaw cycles.

Shipped: Dry Ice

Intended Use: For research use only. Not intended for human, therapeutic, or diagnostic use. Buyer may not modify, sell, or transfer product for commercial use without written permission from EliteImmune.

Recommended Dilutions:

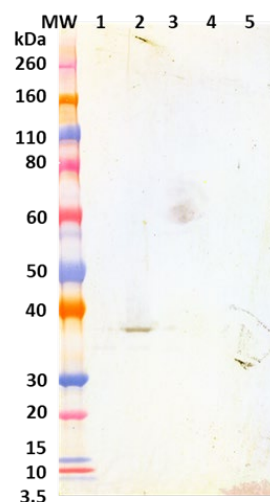
ELISA: Assay-dependent dilution. The antibody can be used for capture of LukF-PV in an indirect ELISA assay and Western blot detection.

WB: Suggested use dilution of 0.50 µg/mL

Neutralization: Assay-dependent dilution

Cross Reactivity: This antibody does not appear to cross react with *S. aureus* antigens Hla, LukS, SEA, or SEB, at the tested concentrations.

Western Blot:



Western blot detection of Hla (lane 1), LukF (lane 2), LukS (lane 3), SEA (lane 4) and SEB (lane 5), 200ng each. LukF-PV was detected with monoclonal antibody O51 at 0.50 µg/mL and an anti-human IgG-HRP conjugate.

ELISA Data:

ng/mL	OD 650 nm				
	Hla	LukF	LukS	SEA	SEB
100.000	0.111	3.594	0.109	0.094	0.100
10.000	0.114	3.642	0.081	0.072	0.071
1.000	0.108	3.759	0.086	0.085	0.080
0.100	0.091	3.615	0.085	0.078	0.0097
0.010	0.086	3.303	0.099	0.085	0.112
0.001	0.083	1.694	0.095	0.084	0.095
0.000	0.088	0.339	0.120	0.091	0.096
0.000	0.094	0.117	0.103	0.112	0.108

S. aureus antigens were diluted to 2 µg/mL in PBS for plate coating. Anti-LukF-PV antibody O51 was serially diluted ten-fold from 100 µg/mL and incubated on the coated plates. Washed plates were detected with anti-human IgG-HRP conjugate and TMB substrate. OD650 is reported above.